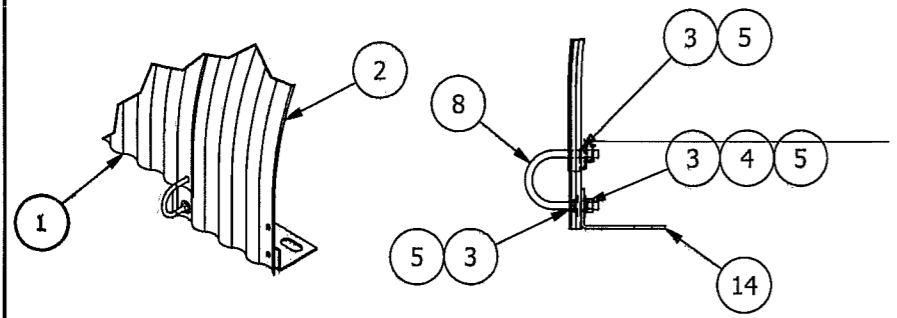
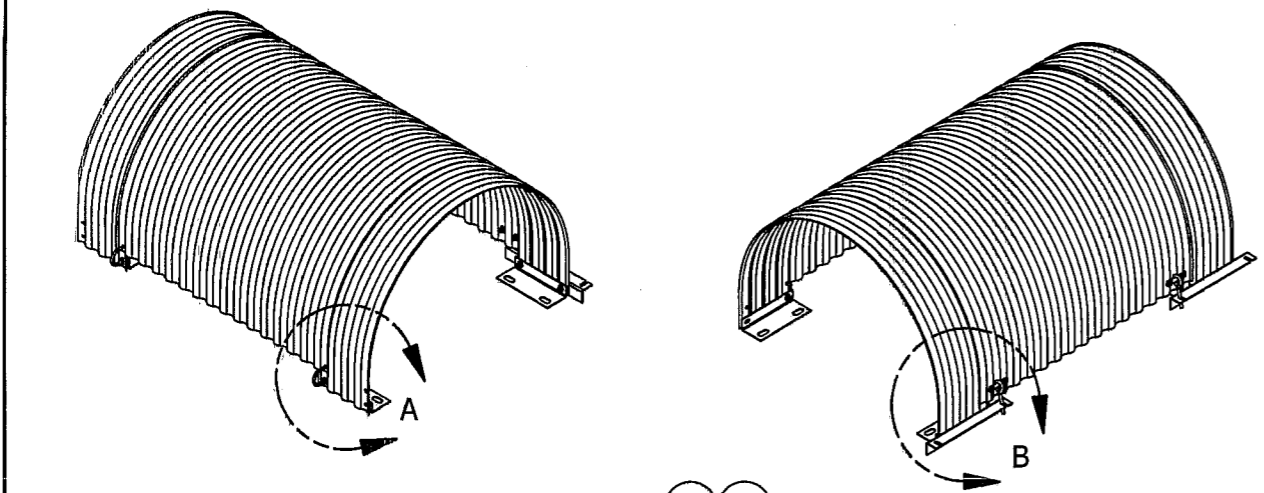
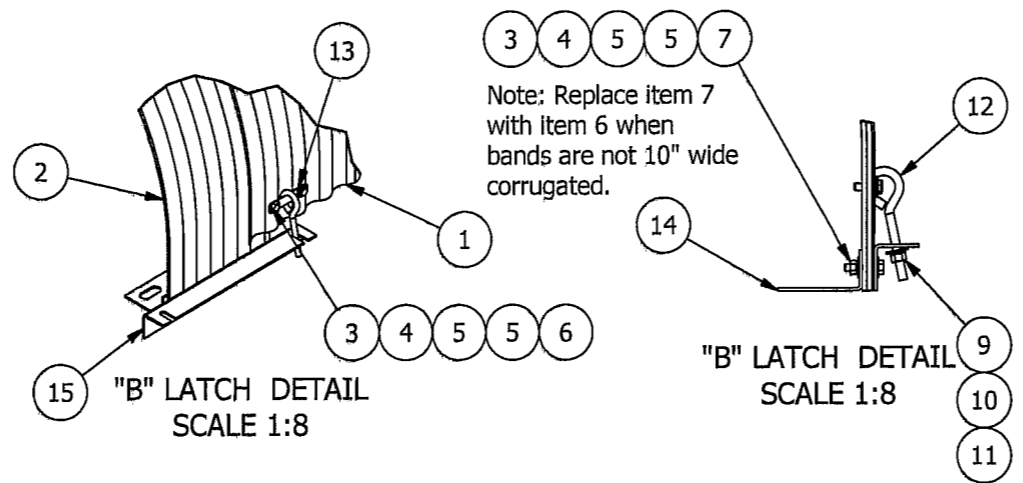


Item	Part Number	Description	Per Cover	Per Band
1	CHCO24GC42	Cover, quick-opening, corrugated 2 2/3" x 1/2", galv G-90; See Table	0	
2	CHCO24GB10	Support band, corrugated 2 2/3" x 1/2", galv G-90; See Table for widths		0
3	516HN-ZN	Hex nut, 5/16-18, zinc plated	10	2
4	516LW-ZN	Lock washer, 5/16", zinc plated	6	2
5	516FW-ZN	Flat washer, 5/16", zinc plated	14	4
6	516-1HB-ZN	Bolt, hex head, 5/16-18 x 1", zinc plated	4	0
7	516-112HB-ZN	Bolt, hex head, 5/16-18 x 1 1/2", zinc plated	0	2
8	516-214UB-ZN	U-Bolt, 5/16 x 18, 2 1/4", zinc plated	2	0
9	38HN-ZN	Hex nut, 3/8-16, zinc plated	2	0
10	38LW-ZN	Lock washer, 3/8", zinc plated	2	0
11	38FW-ZN	Flat washer, 3/8", zinc plated	2	0
12	38-5EB-ZN	Eyebolt, 3/8-16 x 5", zinc plated	2	0
13	FLP-ZN	Latch plate, flat, 5/8" x 3 9/16", zinc plated	2	0
14	CA7-G	Clip angle, 7" mtg hole spacing, 8" upright hole spacing, galvanized	0	2
15	LA-G	Locking angle, 15" long for 10" corrugated bands, galvanized	0	1
16	LAS-G	Locking angle, split in halves for CH-style "smooth bands", galvanized	0	-
17				



"A" HINGE DETAIL
SCALE 1:8

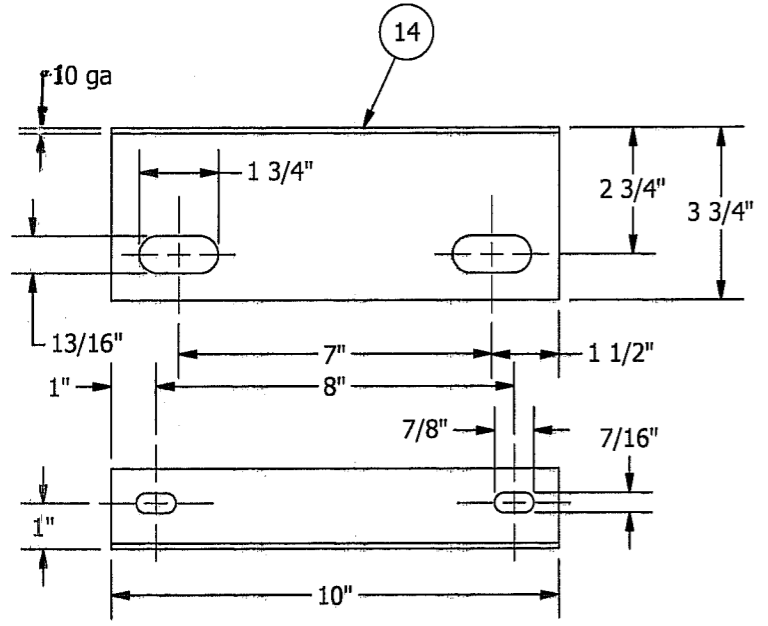
"A" HINGE DETAIL
SCALE 1:8



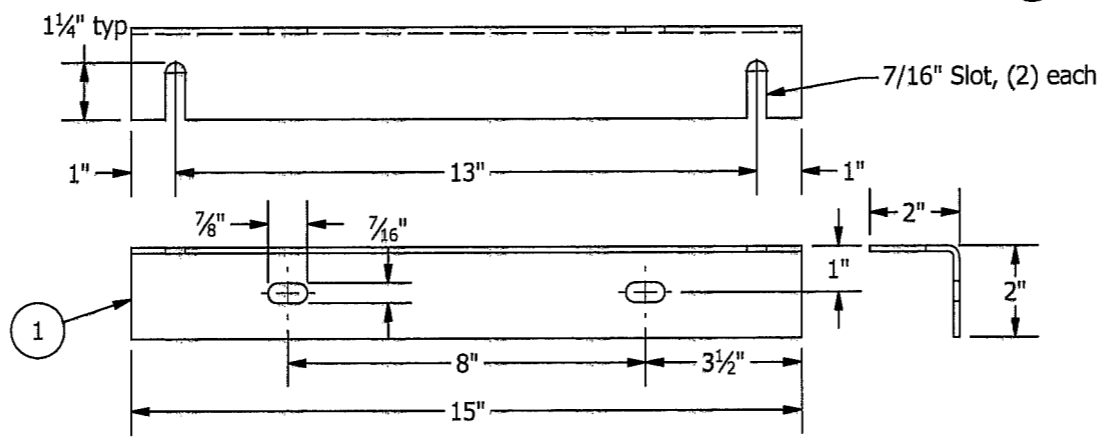
"B" LATCH DETAIL
SCALE 1:8

"B" LATCH DETAIL
SCALE 1:8

Note: Replace item 7 with item 6 when bands are not 10" wide corrugated.



Clip Angle
Scale 1:4



15" Locking Angle for 10" Corrugated Band
Scale 1:4

INSTALLATION PROCEDURE

1. Bolt clip angles [14] to conveyor with 5/8" fasteners, which are normally not provided by RPS.
2. Fasten support band [2] and locking angle [15] to opening side ("front") of cover [1] with 5/16" hardware [3, 4, 5, 7].
3. Insert flat latch plate [13] thru eyebolt [12] and attach latch plate to cover with 5/16" hardware [3-6].
4. Position cover over support bands, and connect cover to rear side of bands with 5/16" U-bolts [8]. See Hinge Details.
5. Secure front side of cover with 3/8" eyebolts. See Latch Details.
6. Be sure bands are perpendicular to conveyor support and that cover fits in band corrugations. Tighten all fasteners.

CONV

		1300 CRISPIN DRIVE ELGIN, IL 60123 847-931-1950		TITLE: CHCO Standards	
SCALE:	NONE	P.O. No.:		DRAWN BY:	DIANA
DATE:		TAG No.:			
FOR:					
JOB:		DRAWING No.:		SHEET:	