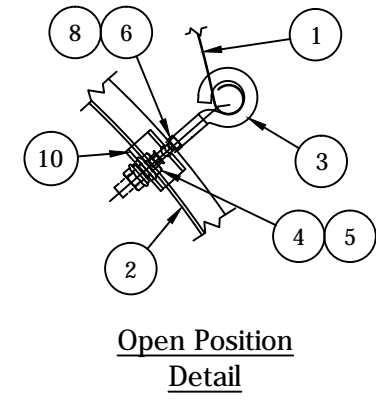
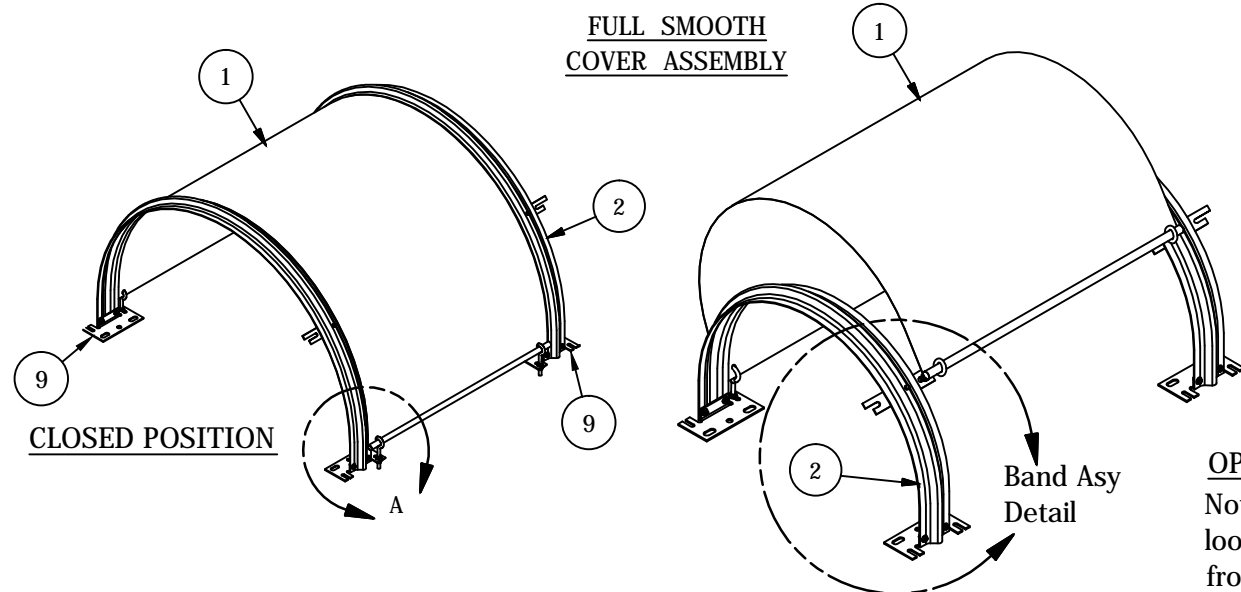


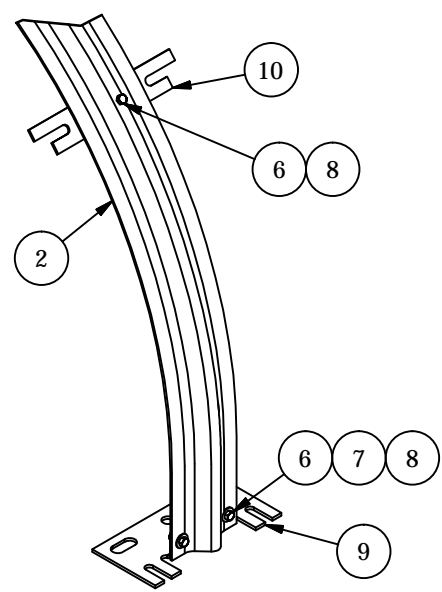
# MA1-CH-SERIES FULL SMOOTH COVERS

Item	Part Number	Description	Per Cover	Per Band
1	MA1-CH**GC40	Cover, Full Smooth	0	
2	MA1-CH**GB	Support Band		0
3	MA1-38-5EB-ZN BO	Eye bolt, 3/8"-16 x 5", Bent Open	4	
4	38FW-ZN	Flat washer, 3/8"	8	
5	38HN-ZN	Hex Nut, 3/8"-16	8	
6	516HHB-ZN	Bolt, Hex Head, 5/16"-18 x 1"		5
7	516FW-ZN	Flat Washer, 5/16"		4
8	516HN-ZN	Hex Nut, 5/16-18		5
9	MA1-FB-HDG A1A60	Foot bracket, 3/16" Hot Dip Galv		2
10	MA1-RB-HDG	Retaining/Inspection bar, 3/16" Hot Dip Galv		1

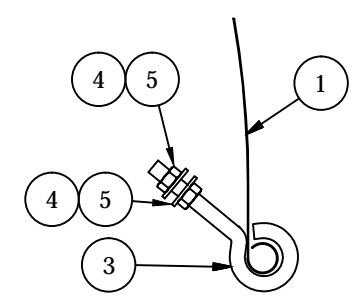
Note: All hardware is zinc plated.  
Wing Nuts for Eyebolts can be supplied for an additional cost.



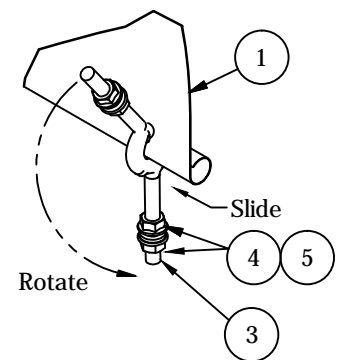
**OPEN POSITION**  
Note: To move covers to Open Position, loosen (do not remove) lower nuts of front eyebolts. Then prop the eyebolts into the retaining brackets. See Open Position Detail.



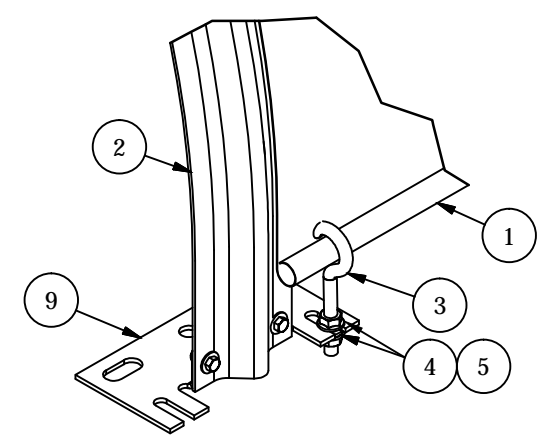
**BAND ASSEMBLY**  
Cover not shown for clarity



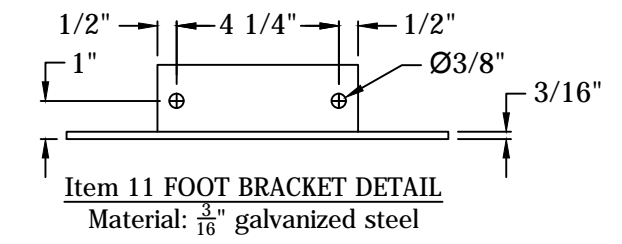
**EYEBOLT INSTALLATION Step 1**  
Slip eyebolt loop over cover end roll.



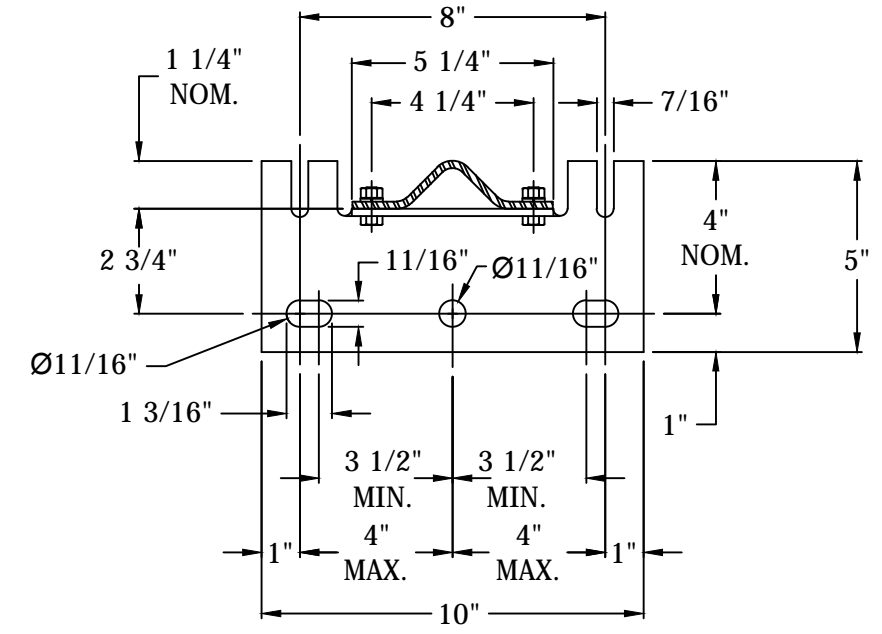
**EYEBOLT INSTALLATION Step 2**  
Slide eyebolt down to hole and then rotate into position.



**DETAIL A COVER ATTACHMENT**



**Item 11 FOOT BRACKET DETAIL**  
Material: 3/16" galvanized steel



**SECTION "A-A"**

**INSTALLATION PROCEDURE**

1. Bolt foot brackets [9] & retaining bar [10] to inside of support band [2] with 5/16" hardware [6-8].
2. Locate support band on conveyor frame at desired spacing.
3. Drill 11/16" dia. holes on centers in conveyor frame to match foot brackets. Foot bracket slots are 11/16" x 1-3/16" to allow for minor adjustments.
4. Bolt bands to conveyor with retaining bar on desired side. This 5/8" hardware is normally not furnished by RPS.
5. Position cover [1] over support bands, and attach to foot brackets with 3/8" eyebolts [3-5]. See Eyebolt Installation Details and Cover Attachment Detail.
6. Make sure bands are perpendicular to conveyor support. Tighten all hardware.

RPS Engineering, Inc. reserves the right to alter designs of its conveyor cover without notice unless certified drawings are supplied.



**Engineering Inc.**

1300 CRISPIN DRIVE  
ELGIN, IL 60123  
(800) 931-1950  
FAX (847) 931-4274

Email: coversales@rpsengineering.com  
www.rpsengineering.com